

CYPRESS

Approximately 1,728 sq. ft. | Two-Story
3 Bedrooms | 2.5 Bathrooms | 2-Car Garage



ELEVATION "A"

DRAFT



ELEVATION "B"

DRAFT



ELEVATION "C"

DRAFT



BLUE RIVER
COMMUNITIES

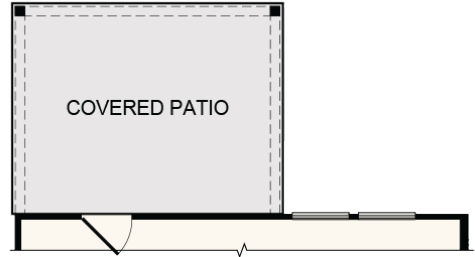
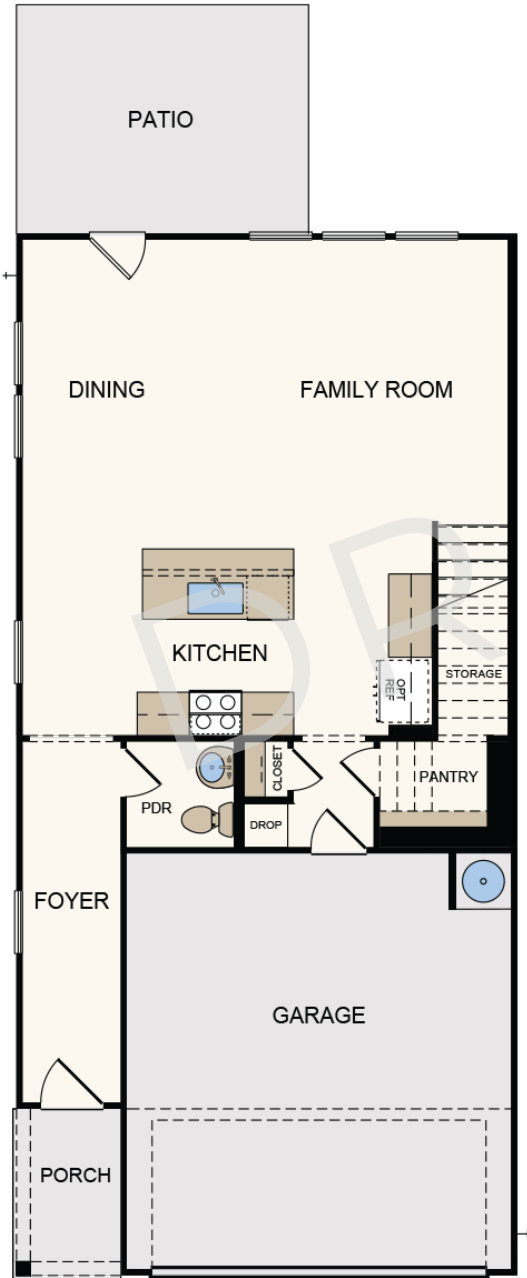


© 2024 Garden Oaks LLC. All Rights Reserved. Floor plans, site maps, and elevation renderings are conceptual and for marketing purposes only. Blue River Communities reserves the right to modify, relocate, add, or eliminate any features, specifications, plans, or designs at any time without notice or obligation to the purchaser. Information is believed to be accurate but is not warranted and is subject to changes, omissions, errors, prior sales, and withdrawal without notice. See a sales associate for more information. Blue River Communities 08/22/2024

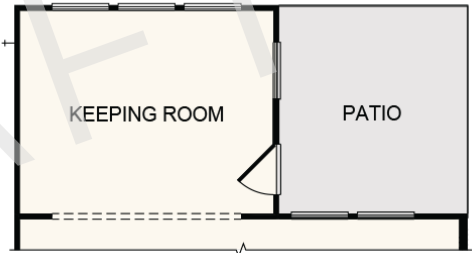
CYPRESS

Approximately 1,728 sq. ft. | Two-Story
3 Bedrooms | 2.5 Bathrooms | 2-Car Garage

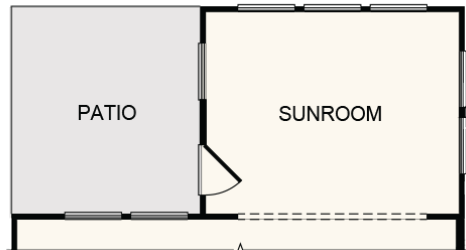
FIRST FLOOR



Optional Covered Patio



Optional Keeping Room



Optional Sunroom



BLUE RIVER
COMMUNITIES

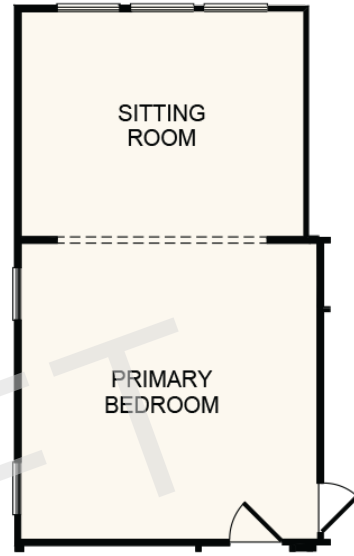
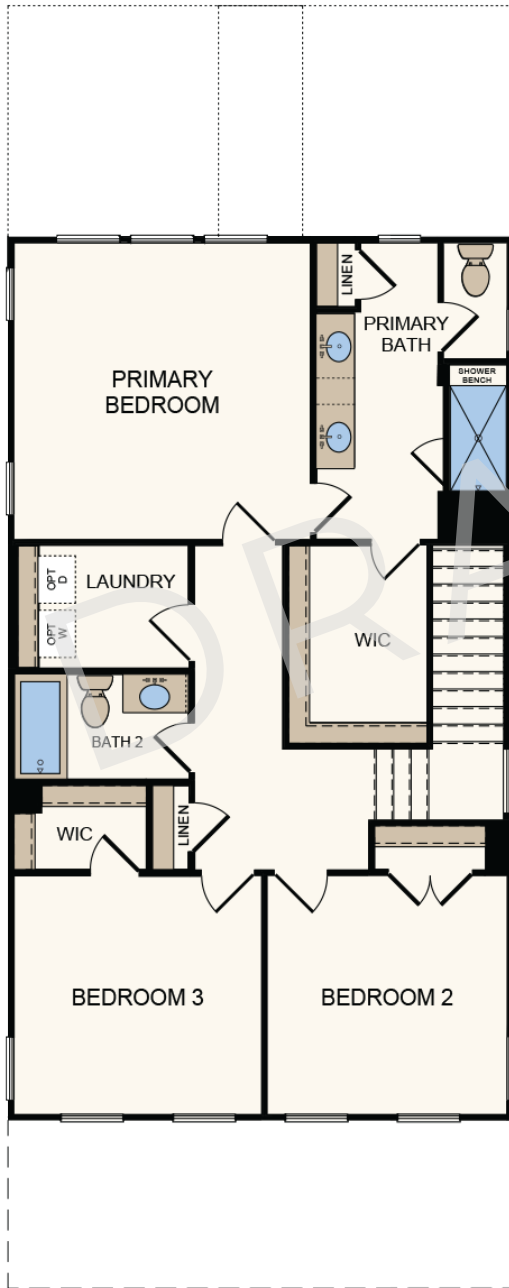


© 2024 Garden Oaks LLC. All Rights Reserved. Floor plans, site maps, and elevation renderings are conceptual and for marketing purposes only. Blue River Communities reserves the right to modify, relocate, add, or eliminate any features, specifications, plans, or designs at any time without notice or obligation to the purchaser. Information is believed to be accurate but is not warranted and is subject to changes, omissions, errors, prior sales, and withdrawal without notice. See a sales associate for more information. Blue River Communities 08/22/2024

CYPRESS

Approximately 1,728 sq. ft. | Two-Story
3 Bedrooms | 2.5 Bathrooms | 2-Car Garage

SECOND FLOOR



Optional Sitting Room if
Keeping Room is Selected



BLUE RIVER
COMMUNITIES



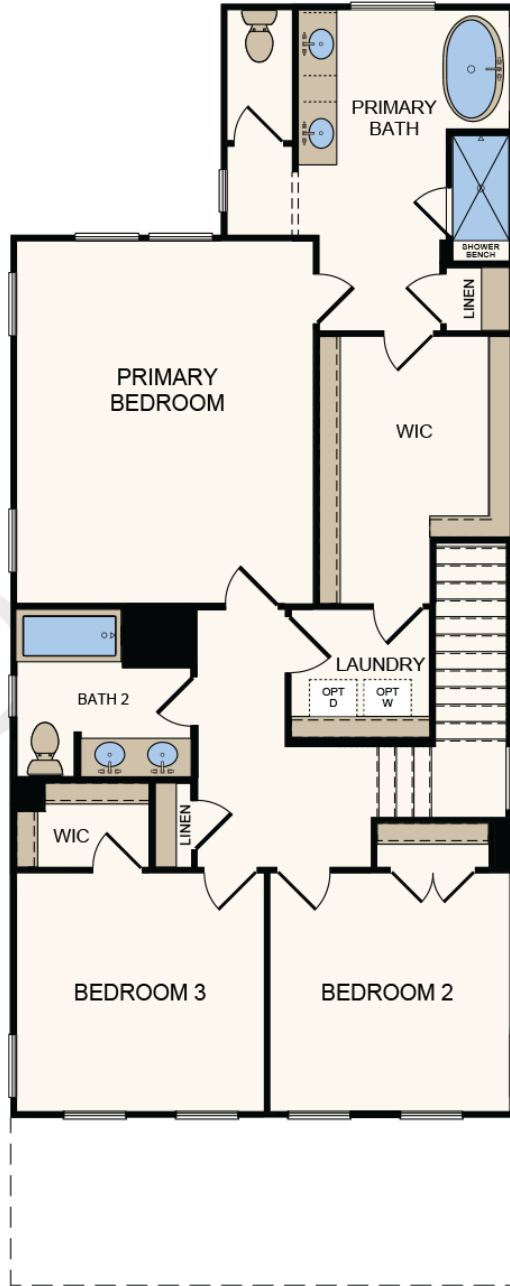
© 2024 Garden Oaks LLC. All Rights Reserved. Floor plans, site maps, and elevation renderings are conceptual and for marketing purposes only. Blue River Communities reserves the right to modify, relocate, add, or eliminate any features, specifications, plans, or designs at any time without notice or obligation to the purchaser. Information is believed to be accurate but is not warranted and is subject to changes, omissions, errors, prior sales, and withdrawal without notice. See a sales associate for more information. Blue River Communities 08/22/2024

CYPRESS

Approximately 1,728 sq. ft. | Two-Story
3 Bedrooms | 2.5 Bathrooms | 2-Car Garage

SECOND FLOOR - OPTIONAL ALTERNATE

if optional Sunroom is selected



BLUE RIVER
COMMUNITIES



© 2024 Garden Oaks LLC. All Rights Reserved. Floor plans, site maps, and elevation renderings are conceptual and for marketing purposes only. Blue River Communities reserves the right to modify, relocate, add, or eliminate any features, specifications, plans, or designs at any time without notice or obligation to the purchaser. Information is believed to be accurate but is not warranted and is subject to changes, omissions, errors, prior sales, and withdrawal without notice. See a sales associate for more information. Blue River Communities 08/22/2024